

NEW: Pall PCC030 Component Cleanliness Cabinet

For the determination of component cleanliness

Features

- Semi-automated working room cleaning process via integral spray nozzles
- Component cleaning via foot-operated hand-held spray gun
- Simple to operate
- Fully portable, requiring only a single phase power source and no further connections for immediate operation
- Simple touch screen programming and menu-driven operating procedures
- Compact, robust design
- Optional ultrasonic cleaning system available
- Highly polished stainless steel internal basin and washing booth
- Illuminated working room with viewing window
- Sealed manual handling access with gloves
- RS232, USB or Ethernet data acquisition

The Pall PCC030 Cleanliness cabinet facilitates the accurate, reliable and repeatable preparation of gravimetric membranes for the determination of component cleanliness.

Principle of Operation

Prior to component cleanliness assessment, the Pall PCC030 Cabinet will carry out an automated self-cleaning procedure to achieve a 'blank' value of cleanliness.

This cabinet has been specifically designed to achieve low blank values. We guarantee blank values for 100µm particle size and above inside the cabinet. This minimizes the effects of residual contamination on subsequent component cleanliness readings. Lower blank values are possible. Please contact Pall for more information about particle sizes and particle size distributions in the PCC030.

Small to medium sized components are placed inside the washing booth and rinsed with pre-cleaned wash fluid delivered via a manual spray gun. Alternatively, component contamination can be removed by ultrasonic agitation (optional).

The used wash fluid is collected via a conical basin and passed through a drain which contains a unique cartridge design membrane holder, capable of holding up to three membranes in a cascading arrangement. The cartridge is easy to remove from the basin drain and protects the sensitive membranes from possible damage and external contamination. Membrane removal for analysis can be carried out on or offsite in a more suitable environment while a new membrane cartridge can be installed in the cabinet to continue operations.

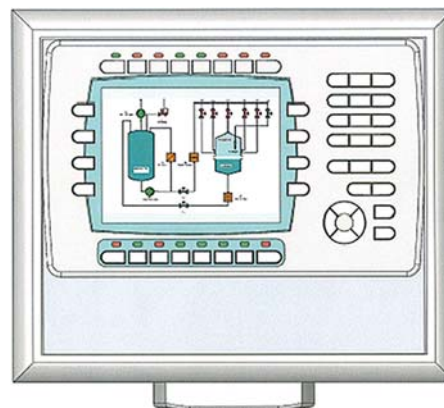
The residual fluid is passed through a high efficiency particulate removal filter and returned to the internal reservoir via a kidney loop/bypass filtration circuit for further use.



Pall PCC030 Cleanliness Cabinet

The PCC030 Cabinet includes a TFT color monitor used to operate, program and track the operation of the cabinet. The user driven menu is simple to use and can interface directly with external control systems via either RS232, USB or Ethernet connections. Real time readings shown on-screen include:

Flow rate	(L/min)
Pressure	(Bar)
Temperature	(°C or °F)
Filter blockage	
Progress of cleaning sequence	



Specifications

Supply Voltage	230V 50Hz 13A Fused
Power rating	0.75KW
Membrane pump rating	100W
Dimensions (WxDxH)	650 x 750 x 1800mm (25.6 x 2.95 x 70.9in)
Typical operating temp	10°C to 45°C (50°F to 113°F)
Wash fluid	Desolvit™ 1000. For other cleaning fluids contact Pall.
Max wash fluid flow rate at nozzle	2 L/min max
Max system pressure	6 bar (87psi)
Reservoir volume	17Liters (4.5 USg) (15 (4USg) Liters fluid)
System filter rating	0.65µ @ 99.98 efficiency

Ultrasonic system (optional)

Frequency	40kHz
Rated output	160W
Oscillation generators	4
Wash booth enclosure rating	IP 65: NEMA 4
Weight	approx. 200kg (440lb)
Signal output	RS232 Serial, USB (local PC connection), customers Ethernet
PC software	Included
Systems requirement	Windows 98 or later, serial interface

Pall Cleanliness Cabinets comply with all relevant EC directives and carries the CE mark

Hardware

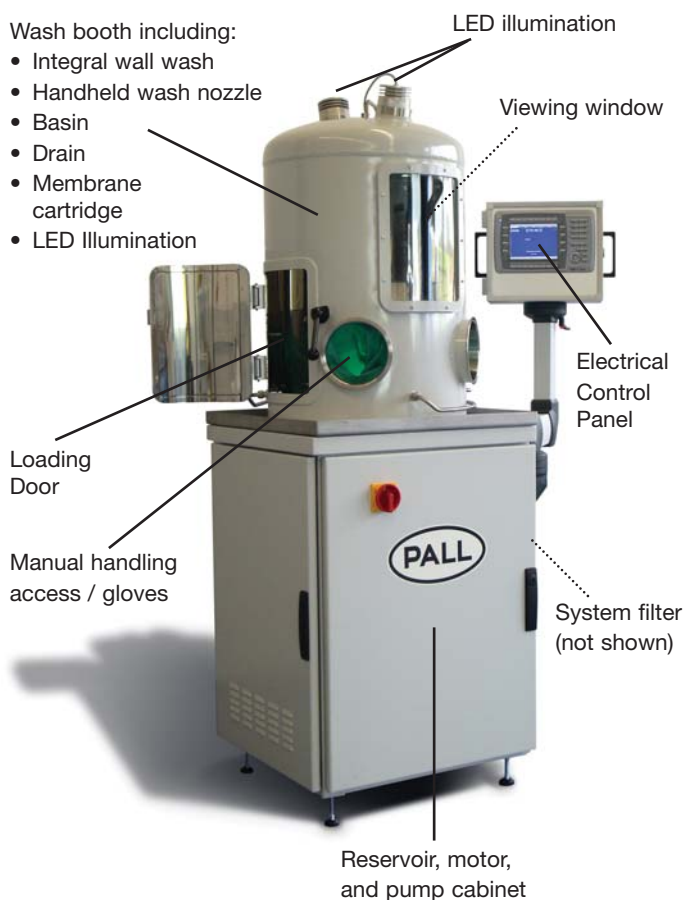
Cabinet frame,	Steel, powder-coated, Light gray
All internal wash areas	Polished, 316L Stainless steel
Hood (external)	Stainless steel, powder-coated Light gray

For ordering information, please contact pall

Pall PCC030 Component Cleanliness Cabinet

Wash booth including:

- Integral wall wash
- Handheld wash nozzle
- Basin
- Drain
- Membrane cartridge
- LED Illumination



Pall Corporation

Pall Industrial Manufacturing

New York - **USA**
+1 516 484 3600 telephone
+1 888 333 7255 toll free
+1 516 484 6246 fax

Portsmouth - **UK**
+44 (0)23 9230 3303 telephone
+44 (0)23 9230 2507 fax

Filtration. Separation. Solution.sm

Visit us on the web at www.pall.com

Pall Corporation has offices and plants throughout the world in locations including: Argentina, Australia, Austria, Belgium, Brazil, Canada, China, France, Germany, India, Indonesia, Ireland, Italy, Japan, Korea, Malaysia, Mexico, the Netherlands, New Zealand, Norway, Poland, Puerto Rico, Russia, Singapore, South Africa, Spain, Sweden, Switzerland, Taiwan, Thailand, United Arab Emirates, United Kingdom, United States, and Venezuela. Distributors are located in all major industrial areas of the world.

Because of developments in technology these data or procedures may be subject to change. Consequently we advise users to review their continuing validity annually. Part numbers quoted above are protected by the Copyright of Pall Europe Limited.

® and Pall are trade marks of Pall Corporation.
Filtration. Separation. Solution is a service mark of Pall Corporation.
Desolvit is a trademark of Orang-SoGroup of Companies Ltd.
® indicates a trademark registered in the USA.
© Copyright 2007, Pall Corporation.